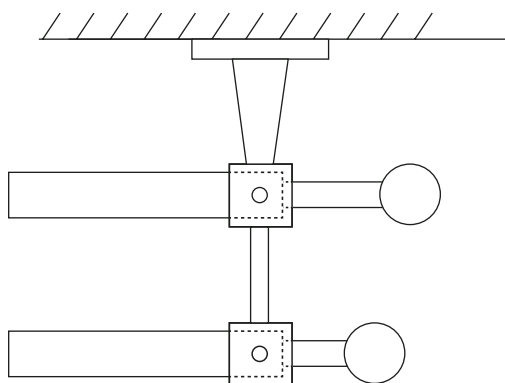
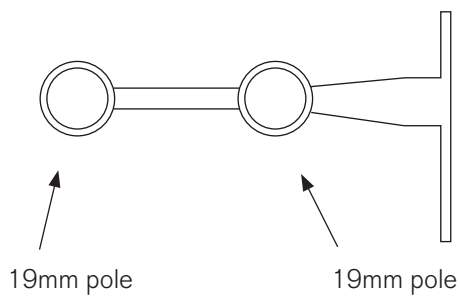


DOUBLE POLE FITTING INSTRUCTIONS

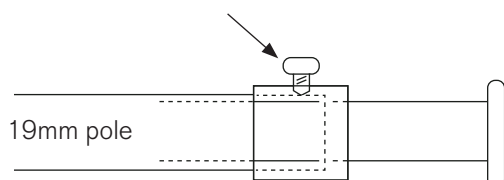
Identify type of system being installed:

19 / 19 SYSTEM

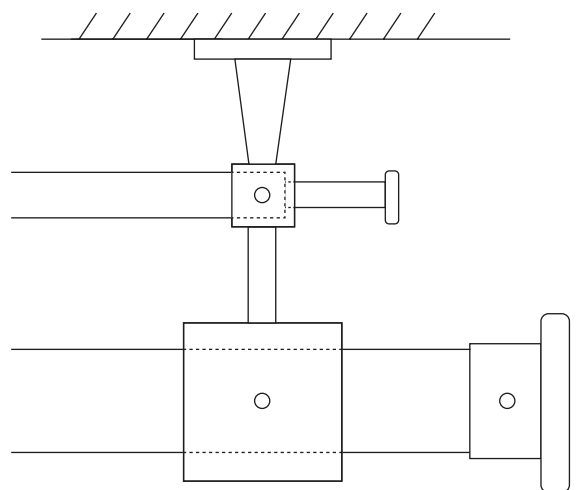
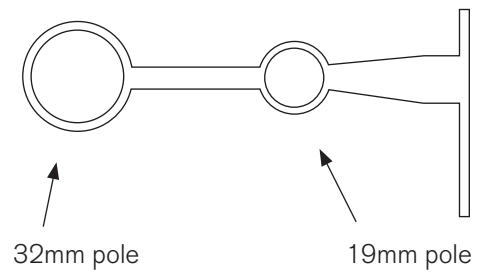


All 19mm poles should be fitted so that the pole ends within the bracket. The grub screw tightens up on the pole causing it to grip the finial.

Grub screw **DOES NOT** grip finial



32 / 19 SYSTEM



32mm pole only
Grub screw grips pole